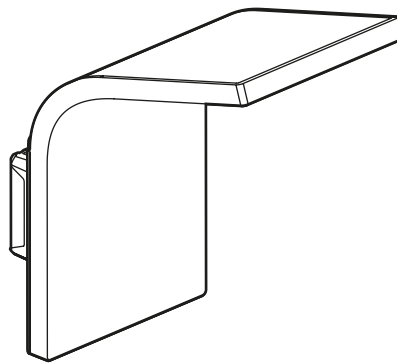


Epure Style Wall light

Cat. No(s): 67340 - 67440 - 67840 - 67940



1. USE

LED wall lights.
Two lighting ambiances that can be selected with a microswitch (warm colour, cool colour).
Supplied complete.
Flush mounted in a standard 50 mm-deep Batibox.

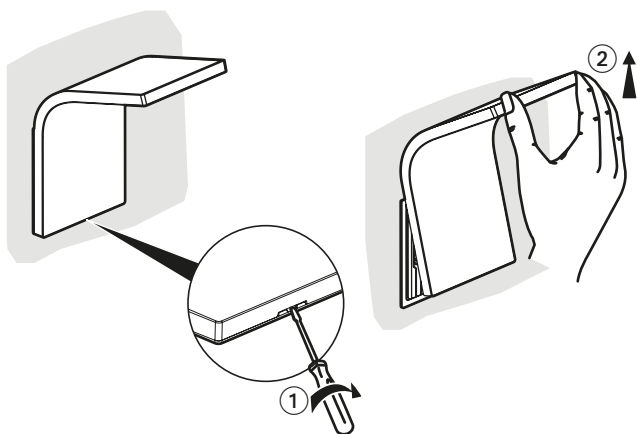
2. RANGE

67440	● Brushed steel	LED wall lights for lighting ambiance 2 P - Class II
67340	● Bronze	
67840	● Matt black	
67940	○ Satin white	

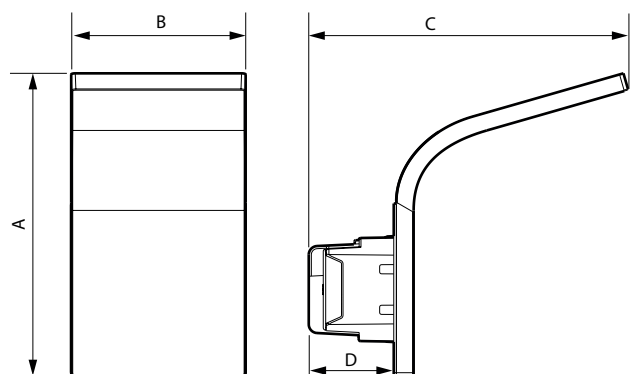
Note: Other finishes and configurations are provided, see technical data sheet F02217EN/00.

3. DISMANTLING

The plates can be dismantled by inserting the tip of a screwdriver in a purpose-designed notch on the sides of the plate and using it as a lever to unclip it from the fixing points.
Once the plate has been lifted off the wall slightly, just slide your fingers between the plate and the wall to gently remove the plate.
Take care not to pull too hard on the plate, to avoid breaking the fixing clips.



4. OVERALL DIMENSIONS (mm)



A	B	C	D
150	86	157.5	42

5. CONNECTION

Type of terminals: with screws
Terminal capacity: 2 x 1.5 mm²
Stripping length: 8 mm
Compatible flexible or rigid cable
Screwdriver: flat 3 mm

6. TECHNICAL CHARACTERISTICS

■ 6.1 Mechanical characteristics

Impact test: IK 02
Ingress of solids/liquids: IP 20

■ 6.2 Material characteristics

Cover: PC
Sub-plate: transparent PC

Wall light:

- Brushed steel: brushing + steel colour galvanising + varnish
- Bronze: oxidisation of the brass + patina and brushing + varnish
- Matt black: bronze + matt paint
- Satin white: bronze + silk-feel paint

Self-extinguishing:

- 850° C / 30 s for insulating parts holding live parts in place
- 650° C / 30 s for the other insulating components

6. TECHNICAL CHARACTERISTICS (continued)

■ 6.3 Electrical characteristics

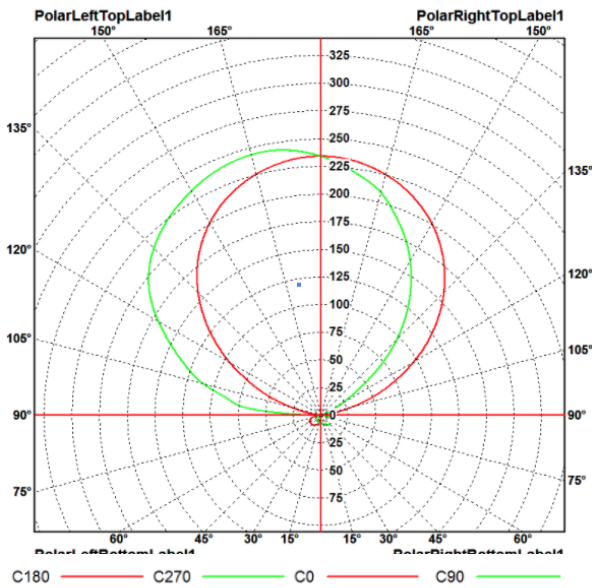
Voltage: 230 V~
 Frequency: 50/60 Hz
 Power: max. 9 W

Colour	Colour temperature	Luminous flux
Warm white	3000 K	628 lm
Cool white	5700 K	614 lm

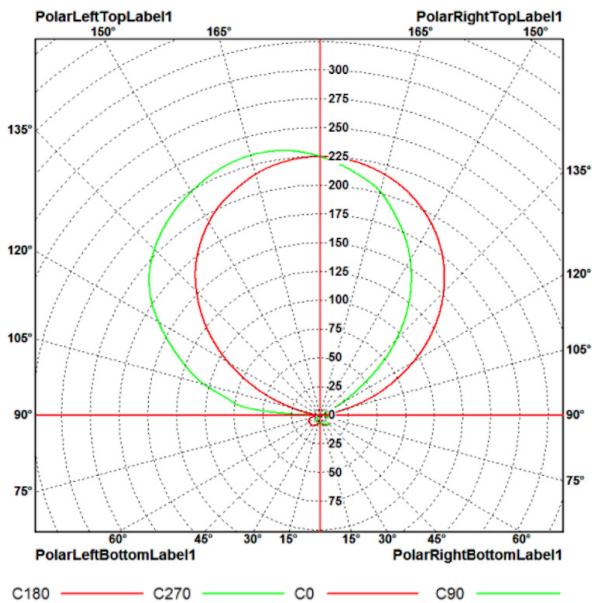
Product tested for 40,000 on/off operations

■ 6.4 Photoelectric characteristics

Warm white



Cool white



■ 6.5 Climatic characteristics

Storage temperature: -10° C to + 70° C
 Use temperature: - 5° C to + 40° C

7. CARE

■ 7.1 Instruction

Use a cloth moistened with methylated spirit, glass cleaner or soapy water. These products contain no harsh chemicals and are non-abrasive.

■ 7.2 Banned products

Special products for stainless steel, renovator polishes, as these are usually abrasive and contain harsh chemicals.

- Products containing bleach or acid (descalers for example).
- Scouring powders (these contain abrasives).

8. STANDARDS AND APPROVALS

CE