



Vandal-resistant entrance panel

Installer manual

bticino



Vandal-resistant entrance panel

Installer manual

Contents

Introduction	5
Warnings and recommendations	5
What's in your box	5
Description	6
Front view	6
Back view	7
Installation	8
General rules for installation	8
Technical features	8
Dimensional data	9
Flush mounted installation	10
Wall mounted installation	10
Physical configuration	11
Connections	12
Volume adjustment	12
Completing the installation	13
Installing the accessories	14
Camera lens and display glass replacement	15
Configuration using the keypad	16
Access to the configuration menu	16
If the password is forgotten	17
Language	17
Panel settings	18
Device settings	18
Password setup	18
Home page	19
Acoustic signalling	20
Restore default settings	21
Address book	22
Building type	22
Calling mode - List of names	22
Calling mode - Type of code	23
Calling mode - Function of bell button	23
Calling mode - Recall	23

Sorting of the list	24
Contact setting	24
Modifiy contact	24
New contact	25
Delete contact	26
Delete address book	26
Phonic module settings	27
Access control settings	28
FW versions	29
Configuration using the software	30
TiMonoblockEntrancePanel configuration software	30
Connection to the PC	30
Using the entrance panel	31
Calling residents	31
Searching using the arrow keys	31
Through surname search	31
Using the numerical code	32
Call to the switchboard (only in multifamily configuration)	32
Call the only resident (Only in single family configuration)	33
Door lock release using a numerical code	34
Changing the lock code	35

Vandal-resistant entrance panel

Installer manual

Introduction

Warnings and recommendations

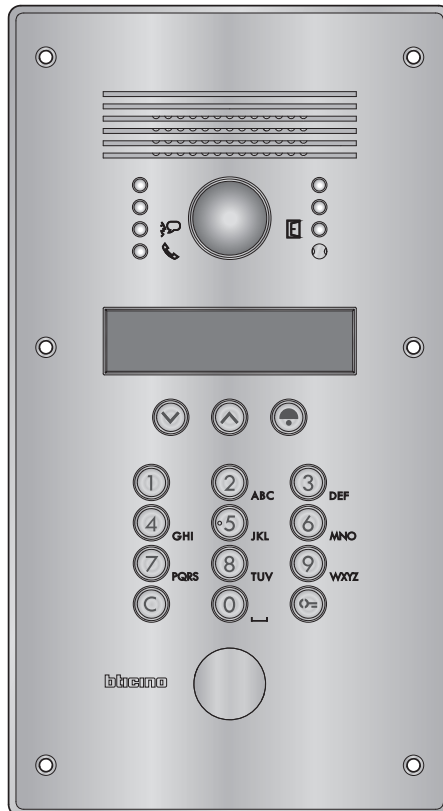
Before proceeding with the installation we recommend that you read the content of this manual very carefully.

The warranty will automatically become void in case of negligence, improper use, or tampering by unauthorised personnel.

What's in your box

In your box you will find:

- Vandal-resistant entrance panel 308040
- CD containing the Installer manual, as well as the configuration software with its user manual.

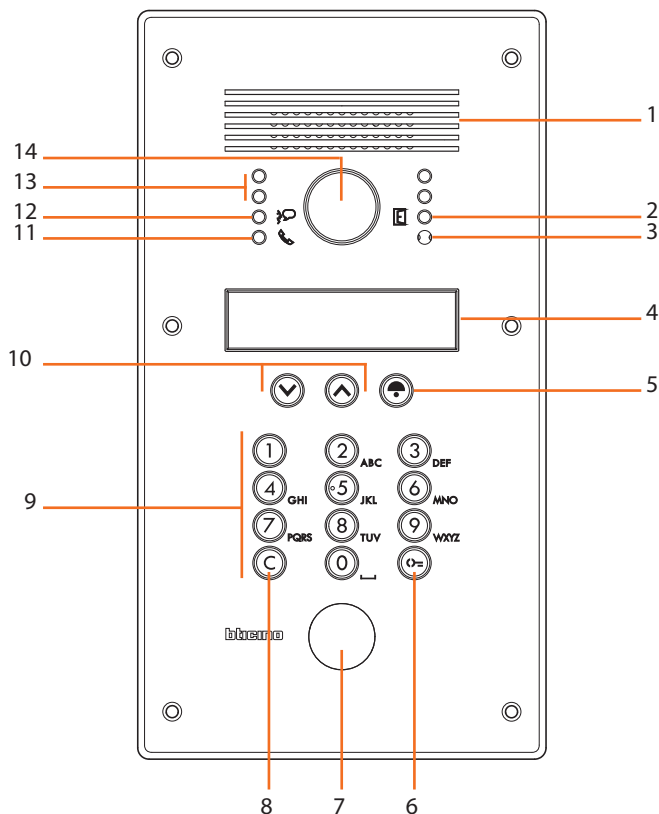


Vandal-resistant entrance panel

Installer manual

Description

Front view

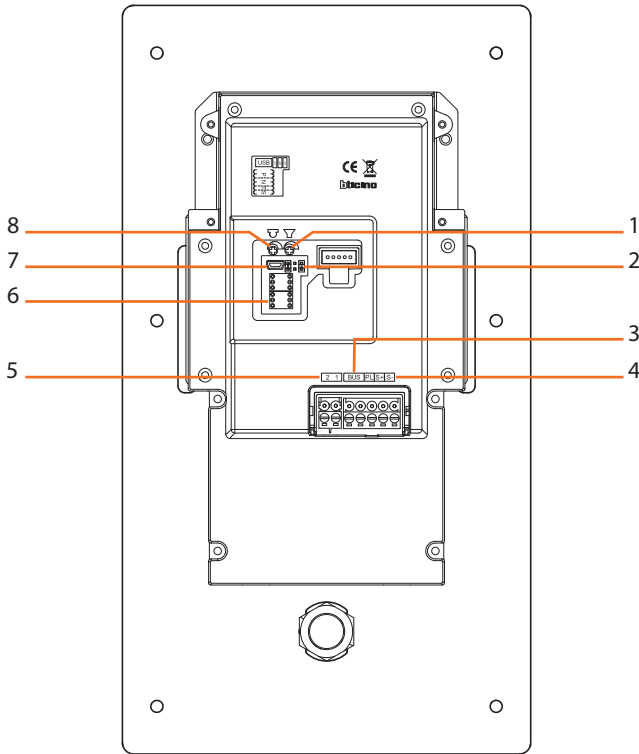


- | | |
|--|---|
| 1. Loudspeaker | 10. Resident search keys |
| 2. Green LED: door open notification | 11. Green LED: call forwarded
Red LED: system busy |
| 3. Microphone | 12. Green LED: communication active |
| 4. Display | 13. 4 x lighting LED |
| 5. Key used to send the call to the selected resident, or to the switchboard | 14. Camera |
| 6. Door lock release key | |
| 7. Preset for VIGIK® reader, or key lock release | |
| 8. Delete key | |
| 9. Alphanumeric keypad | |

Vandal-resistant entrance panel

Installer manual

Back view



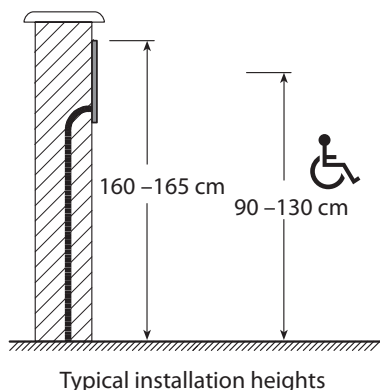
1. Loudspeaker volume adjustment
2. Jumpers (see table in the Programming section).
3. SCS/BUS connection
4. Connection of the door lock and door lock release pushbutton
5. Additional power supply
6. Configurator socket
7. MiniUSB connector for the connection to the PC
8. Microphone volume adjustment

Installation

General rules for installation

The camera must not be installed facing strong light sources, or in locations where the area being shot is strongly backlit. In order to resolve these problems, we recommend that the camera is installed at a height of 180 cm, instead of the usual 160 – 165 cm, with the lens pointing down. This will improve image quality.

In low light situations, the colour rendition of the image displayed by the colour camera may decrease. This is to ensure that the person being displayed can be better recognised. To ensure optimum vision in low lit rooms, the installation of an additional light source is recommended.



Technical features

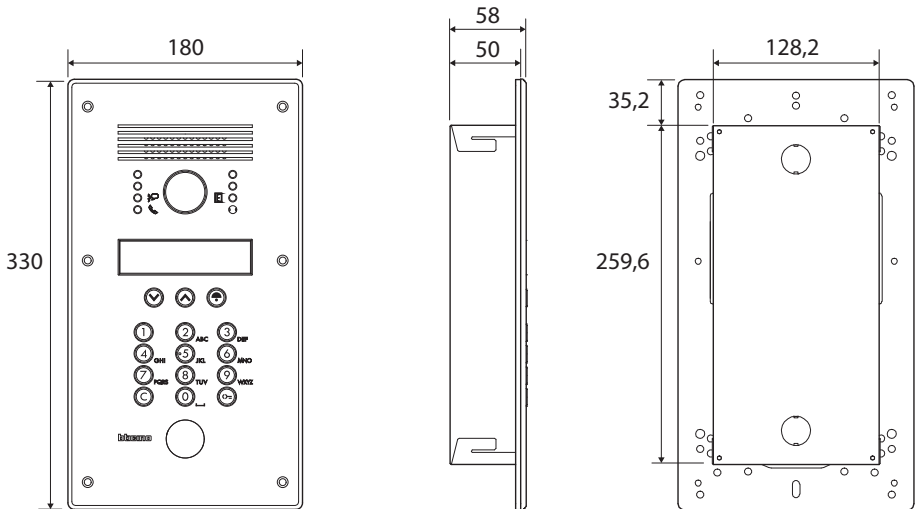
- 1/4" sensor
- lens F: 2,1 mm; f: 1,0 mm
- Power supply 18 – 27 Vdc
- Absorption:
105 mA (stand-by)
340 mA (max in operation)
- Interlaced 2:1
- 400 lines resolution(horizontal centered)
- Night lighting by the white LEDs
- Automatic brightness adjustment
- Operating temperature (-25) – (+70) °C
- Angle of vision:
horizontal 124°
vertical 100°
- Protection index: IP54
- Protection index against mechanical impact: IK07

Vandal-resistant entrance panel

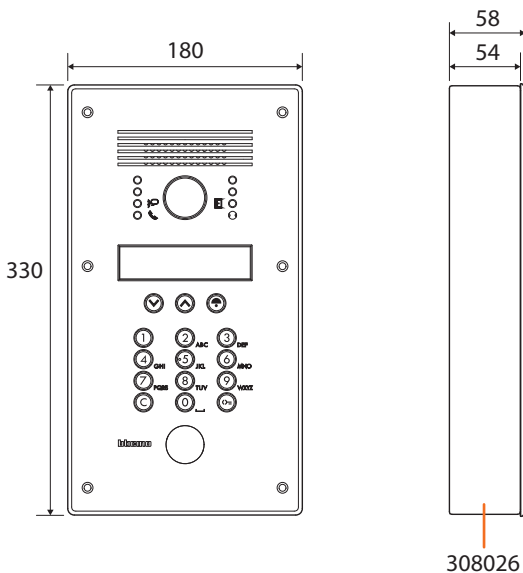
Installer manual

Dimensional data

Flush mounted installation



Wall mounted installation

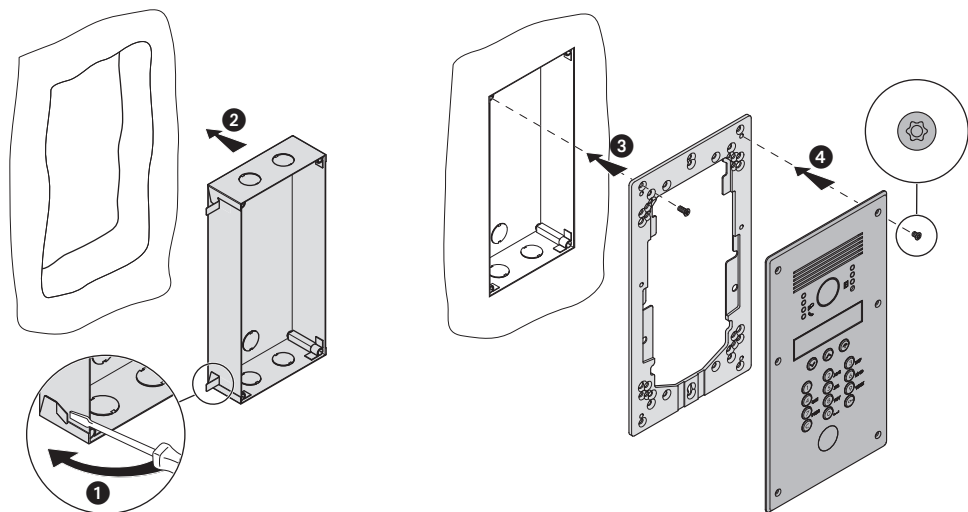


Vandal-resistant entrance panel

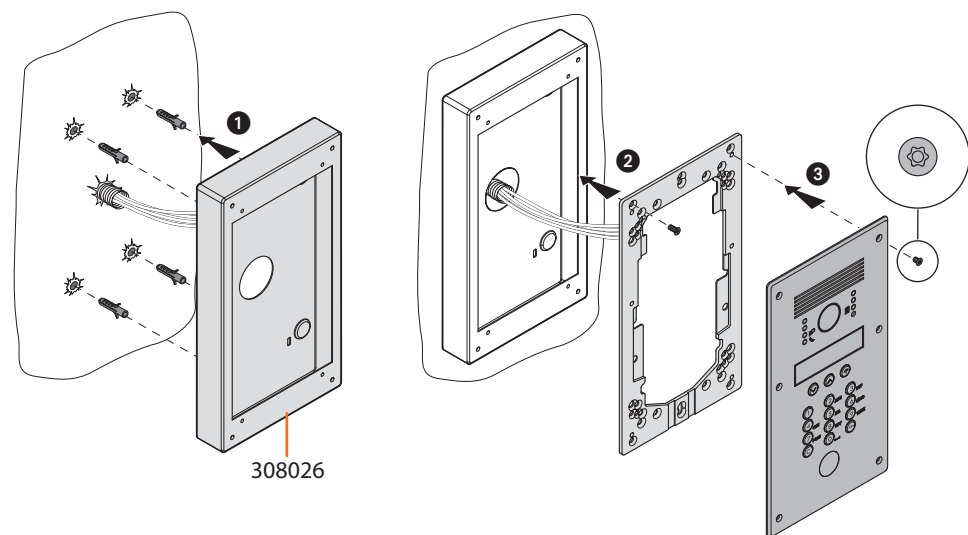
Installer manual

bticino

Flush mounted installation



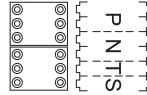
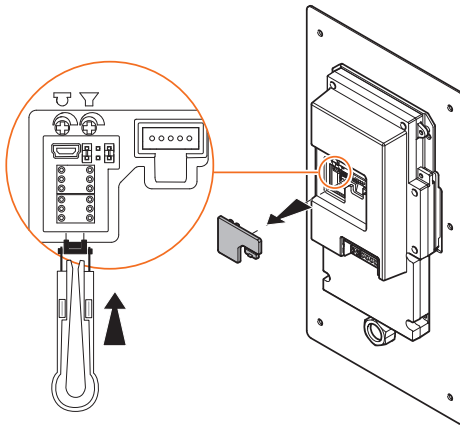
Wall mounted installation



Vandal-resistant entrance panel

Installer manual

Physical configuration

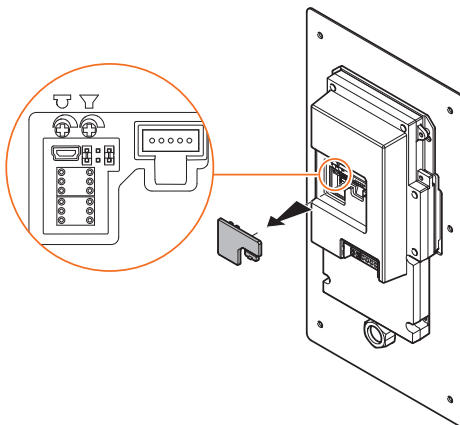


P = Entrance panel number

N = Call number (Not used)

T = Door lock time delay

S = Type of call signal



J1 - Jumper connected to J1
(default) = control speech
synthesis enabled; sound
notification disabled

J2 - Jumper connected to J2 =
control speech synthesis
disabled; sound notification
enabled

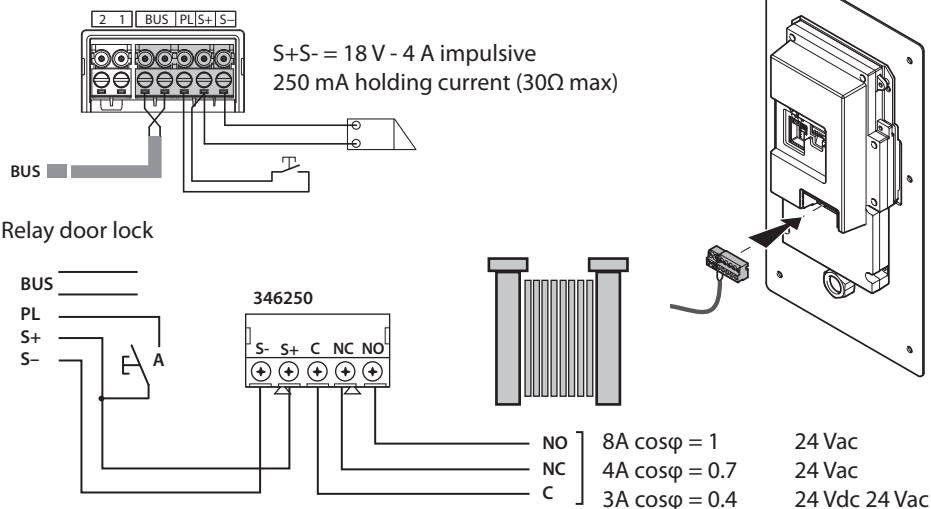
J3 - Remove in case of additional
power supply

Vandal-resistant entrance panel

Installer manual

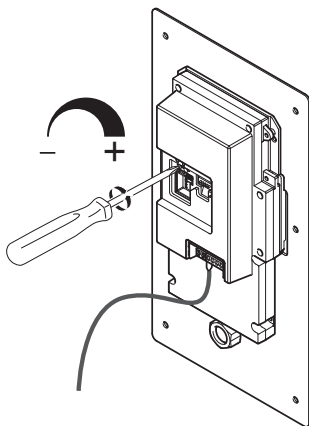


Connections



Volume adjustment

In case of high pitch noise (Larsen effect), first try reducing the power of the microphone using a screwdriver on the corresponding potentiometer, until an acceptable level is reached. If the problem continues, adjust the potentiometer of the loudspeaker to eliminate the problem. If the volume is too low, increase first the volume of the loudspeaker and then if necessary also the volume of the microphone, remembering that the best solution is a clear transmission, without disturbance, at the limit just below the occurring of the Larsen effect.

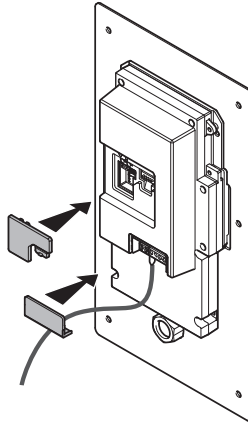


Vandal-resistant entrance panel

Installer manual

Completing the installation

Warning: before securing the entrance panel to the wall fit the protection caps in their housings, ensuring that they are positioned correctly



Warning: when switched on for the first time, the entrance panel will ask the user to select the language; once this has been done, it will be possible to access the menus

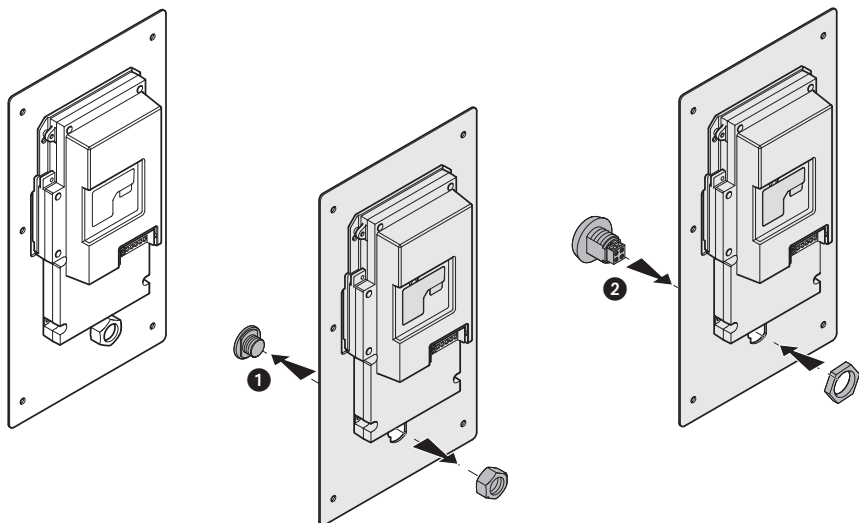


Vandal-resistant entrance panel

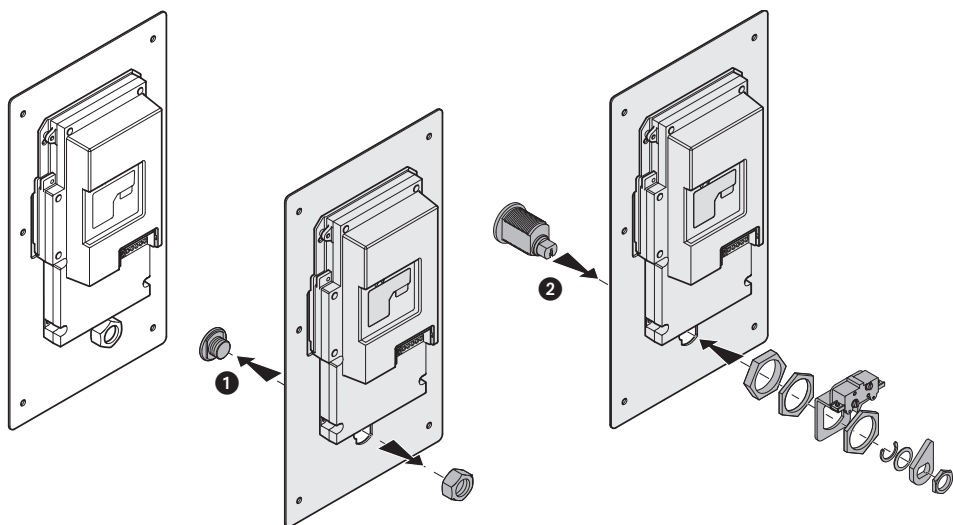
Installer manual

Installing the accessories

VIGIK® transponder reader



CCT75NM key switch

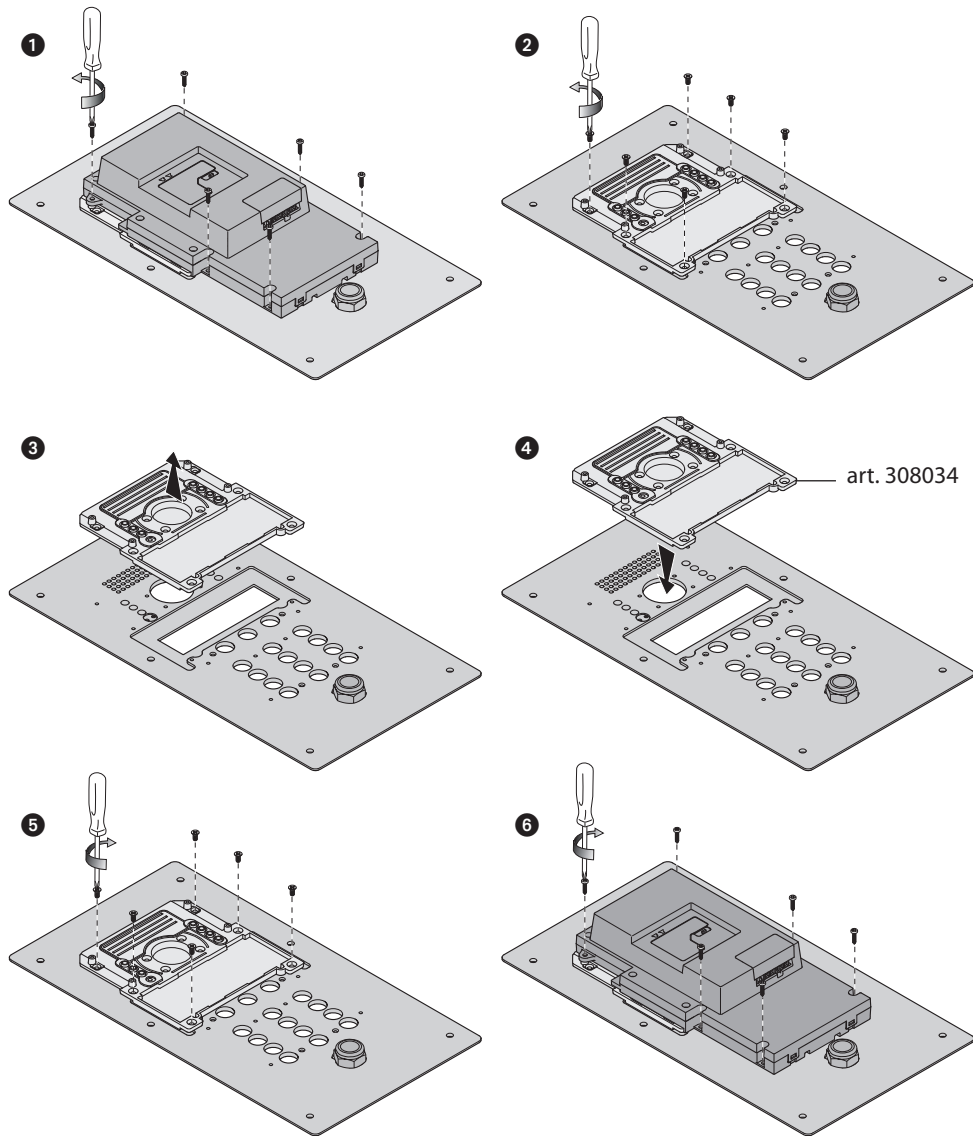


Vandal-resistant entrance panel

Installer manual

Camera lens and display glass replacement

To protect from acts of vandalism, for the most delicate parts of the device we have included item 308034. This item makes it possible to replace the camera lens and the display glass in one operation.



Configuration using the keypad

Access to the configuration menu



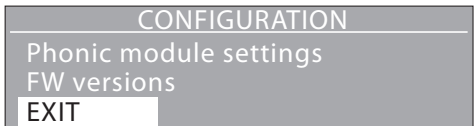
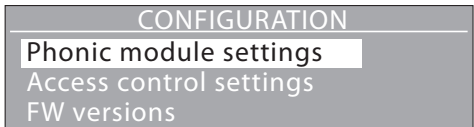
Press and hold down simultaneously keys for more than 10 seconds



Enter the access code (default 12345)



If the correct code has been entered, direct access to the configuration menu will be granted



To exit the configuration menu select EXIT and press

Warning

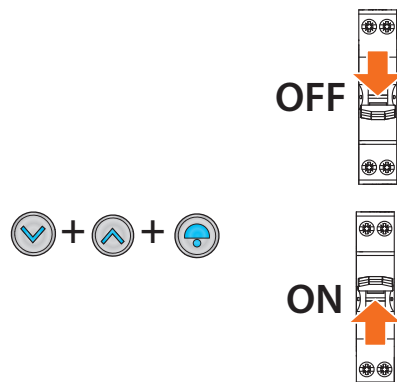
For all the other menus outlined below: to return to the previous menu click EXIT followed by , or simply

Vandal-resistant entrance panel

Installer manual

If the password is forgotten

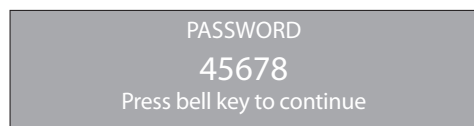
If the password has been forgotten it's possible to reset it in this way:



Shut down the power supply

Keeping pushed the keys and turn on again the power supply.

The display shows the current password



Press to continue

Language



Press



Select the desired language



Confirm

The set language will be marked by an asterisk



Vandal-resistant entrance panel

Installer manual




Panel settings

CONFIGURATION	
Language	
Panel settings	
Address book	

Select the menu  

PANEL SETTINGS	
Device settings	
Password	
Home page	

Confirm 

Device settings

DEVICE SETTINGS	
Brightness	  
Contrast	  
Keyboard light	ON

The DEVICE SETTINGS submenu can be used to set the following functions:

Brightness: display brightness adjustment

Contrast: contrast adjustment

Keyboard light setting:

- ON = keyboard always on (default setting)
- ECO = the keyboard light comes on when in use
- OFF = the keyboard light is always off

Password setup

PASSWORD SETUP	
Password	12345
EXIT	


To change the access password:

Press 

Enter the new password

PASSWORD SETUP	
Password	67890
EXIT	

Confirm 

Vandal-resistant entrance panel

Installer manual

Home page

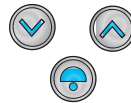
The home page can be used to enter a customised welcome message, or any other message; the message can use a maximum of three rows of text of 15 characters (Template); to switch from upper case to lower case and vice versa use the arrow keys. The length of time the message is displayed on the screen (5, 10, or 15 sec.) (Timeout).

Entering the text

HOME PAGE	
Template	1 line
Timeout	5 sec
Text	-->

Press 

HOME PAGE TEXT	
Line 1	-->
Line 2	-->
EXIT	



Select the row where to enter the new text, or change the existing text and confirm

HOME PAGE TEXT	
Line 1	Welcome
EXIT	

Press  to select the text field

HOME PAGE TEXT	
Line 1	MY TEXT
EXIT	

Enter the text using the alphanumeric keypad, in the same way as you would write an SMS message on your mobile phone

Confirm 

HOME PAGE TEXT	
Line 1	MY TEXT
EXIT	

The new message will appear continuously on the home page for the period set a Timeout

Acoustic signalling



The ACOUSTIC SIGNALLING submenu can be used to enable/disable the following functions:



- Key sound** Audible signal emitted when the keys are pressed
- Lock code change beep** Audible signal emitted when the door lock code is being changed
- ON= short BEEP if the code entered is correct
long BEEP if the code is incorrect
 - OFF= Audible signal disabled

Voice msgs: volume Volume adjustment for voice messages broadcasted by the device

The other menu items represent voice messages relating to events (e.g. "Call in progress", "End of call", etc.).



They may be enabled/disabled individually with the following procedure.



Select an item from the menu  

Press 



Set as required  

Confirm 


Voice messages are only active when jumper J1 is connected (see Physical configuration).

Vandal-resistant entrance panel

Installer manual

Restore default settings

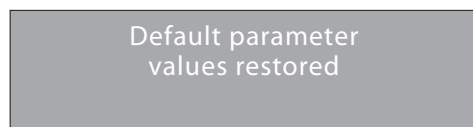


Select the function  



The request to confirm the restore appears

Press 



The settings of the entrance panel revert to the factory settings.

This function does not delete the data contained in the residents address book.

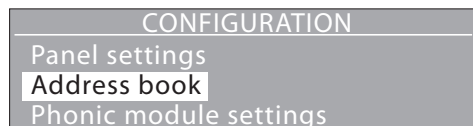
Vandal-resistant entrance panel

Installer manual



Address book

This menu can be used to enter residents' data, including call codes and door lock release codes, as well as for performing any other functions described in the following paragraphs.




Building type



Press 

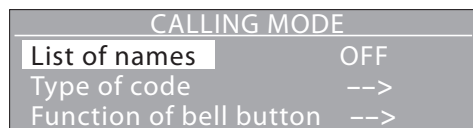


For systems with several apartments use Multifamily mode (default).

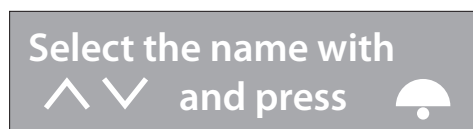
In Single Family mode, the call is activated directly by pressing , without the need for selecting the extension.

Press 

Calling mode - List of names



This setting determines how the names of the residents are displayed; if enabled, the display will show the following message:



To search the desired name use the indicated key, or enter the surname using the alphanumeric keypad.

Vandal-resistant entrance panel

Installer manual

Calling mode - Type of code

CALLING MODE	
List of names	ON
Type of code	-->
Function of bell button	-->

Enter the type of code to use when calling the residents

CODE TYPE	
Apartment address	*
Call code	
EXIT	

Apartment address


SCS address of the handset

Call code

Numerical code assigned to the resident

Calling mode - Function of bell button

CALLING MODE	
List of names	ON
Type of code	-->
Function of bell button	-->

The key  can be enabled for direct call to the switchboard.

In multifamily: enable/disable the bell button for calling the switchboard.

In single family: set the address which will be called by the bell button (i.e. the address of the internal units, usually set to 0).

To call the concierge
press the button 

Display in "Switchboard" mode

To call press
the button 

Display in "Single Family" mode

Calling mode - Recall

CALLING MODE	
Type of code	-->
Function of bell button	-->
Recall	0

When this function is enabled, the entrance panel will automatically repeat.

0= no recal

1= 1 recall after 10 sec

2= 2 recalls every 10 sec

3= 3 recalls every 10 sec

Vandal-resistant entrance panel

Installer manual



Sorting of the list

ADDRESS BOOK	
Building type	
Calling mode	
Sorting of the list	

The names can be sorted alphabetically by surname or by identification code number.

SORTING LIST	
By surname	*
By ID number	
EXIT	

The sorting order set is marked by an asterisk.

Contact setting

ADDRESS BOOK	
Contact setting	
New contact	
Modify contact	

The call codes and the door lock release codes can be set with a length of 1 to 8 digits for the Call code and 4 to 9 digits for the Lock code.

CONTACT SETTING	
Call code digits	4
Lock code digits	9
EXIT	

Call code digits

Length of the codes for calling residents (default 4 digits)

Lock code digits



Length of the door lock release codes (default 9 digits)


Modifiy contact

ADDRESS BOOK	
Contact setting	
New contact	
Modify contact	

This function gives the possibility of changing the contact selected

Aaaa Aaaa
Bbbb Bbbb
Cccc Cccc

Select the contact to change  

Confirm 

New contact



This function can be used to enter new residents in the address book

For each resident it will be possible to set the following data:

- **ID number** (use if the desired order of the list is different from the alphabetical order)
Identification number; the entrance panel assigns a progressive number to each resident. This function gives the possibility of changing this ID with a 4 digits number defined by the installer.
- **Surname (Text 1*)** Surname of resident
Name (Text 2*) Name of the resident
- **Public**
YES= The name and the surname of the resident appear on the display during the selection for call
NO= The name and the surname of the resident are hidden, the call is possible by entering the "Call code".
- **Apartment address** Enter the handset SCS address
- **Call code** Numerical call code
- **Lock code** Door lock release numerical code

(*) If "Sorting of the list" is set to "By ID number".



Warning: in installations including an access control central unit, when a badge is placed near the central unit the contact "Surname", "Name" and "Apartment address" are automatically added to the address book.

Delete contact

ADDRESS BOOK
New contact
Modify contact
Delete contact

This function gives the possibility of deleting the contact selected

Aaaa Aaaa
Bbbb Bbbb
Cccc Cccc

Select the contact to change  

Press 

DELETE THIS CONTACT?	
Confirm	
EXIT	Aaaa

The request to confirm the elimination of the contact appears 

Delete address book

ADDRESS BOOK
Delete contact
Delete address book
EXIT

This function gives the possibility of deleting all the contacts of the entrance panel address book

Press 

DELETE THE ADDRESS BOOK?	
Confirm	The address book
EXIT	will be deleted

The request to confirm the action appears: to permanently delete the address book

Press 

Phonic module settings

The configurations of this menu are only possible if the phonic (speaker) module is not configured physically

SCS SETTINGS	
P -Panel number	00
T -Lock time	1
S -Call tone	0

P - Panel number	Entrance panel SCS address (0 – 95)
T - Lock time	Door lock time delay (0– 7)
S - Call tone	Type of call signal (0 – 9)
P - Associated switchboard	The SCS address of the associated riser switchboard (none, 0 to 15)
P - Main switchboard	The SCS address of the main control unit (none, 0 to 15)
Riser (M)	Riser address the EP is part of (M address of interface 346851 of the riser; set to "None" if the EP is installed on the backbone) Note: do not confuse this configurator with the other M referred to the operating mode

Access control settings

The configurations of this menu are only possible if the phonic (speaker) module is not configured physically

ACCESS CONTROL SETTINGS	
Central address (A/B)	00
Reader address (C)	1
Operating mode (M)	0

- Central address (A/B)** Address of the access control central unit that manages the reader (keypad built in the entrance panel, (keypad built in the entrance panel; the A/B address corresponds to the address of the C0/C1 control unit)
- Reader address (C)** Reader address (keypad built in the entrance panel) in the ACC system.
- Operating mode (M)** M=0 - The address book, the calling code and the door lock codes are managed by the entrance panel and can be modified locally from the menu or from the configuration software.
M=2 - The address book, the calling code and the door lock codes are managed by the access control system and must not be modified locally.
Note: do not confuse this configurator with the other M referred to the address of the riser column.

Menu management Full

The settings and the address book can be almost fully modified, with the following exceptions:

- If the address book is not empty, the call code digits and the lock code digits cannot be changed.
- If M = 2, lock codes cannot be changed

Limited (can be set only with TiMonoblockEntrancePanel):

a) The following options can be only remotely changed by the access control central:

- Password
- Language
- Number of call code digits
- Number of lock code digits
- Riser base address

b) The following menu options are not allowed in the installer menu because the access control central takes care of the address book:

- New contact
- Modify contact
- Delete contact
- Delete address book

Vandal-resistant entrance panel

Installer manual

FW versions

This menu shows the versions of the firmware installed on the device.

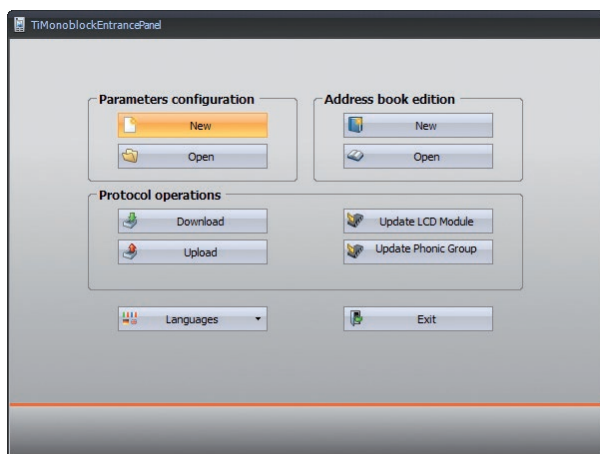
FW VERSIONS	
	LCD Module : 01.02.28
	Phonic Module : 02.02.24
EXIT	

Configuration using the software

TiMonoblockEntrancePanel configuration software

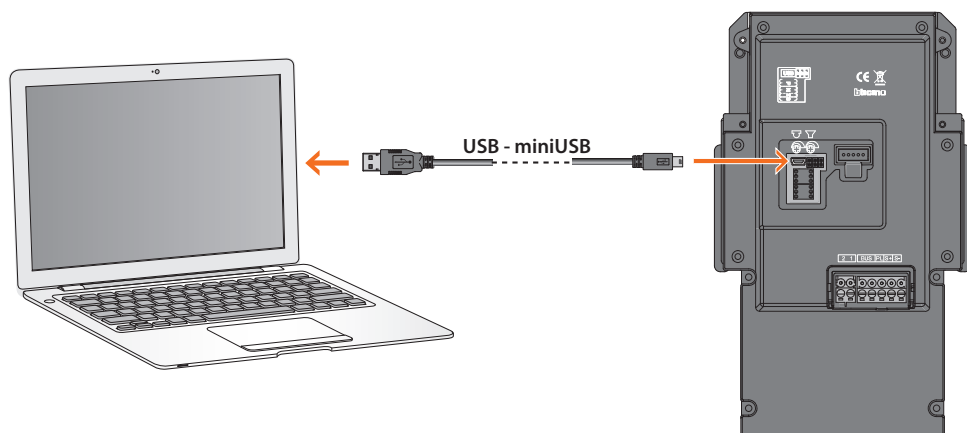
The TiMonoblockEntrancePanel software supplied with the device gives the possibility of configuring the entrance panel for use with video door entry systems only; In this case it will be possible to manage also the residents address book using the software.

In order to use the entrance panel in systems with access control, the configuration must be completed using the device menu, while the residents address book will be managed by access control.



Connection to the PC

To connect the entrance panel to the PC use an USB-mini USB cable



Vandal-resistant entrance panel

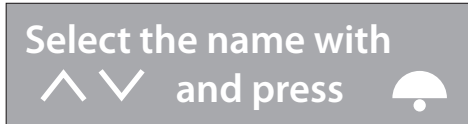
Installer manual

Using the entrance panel

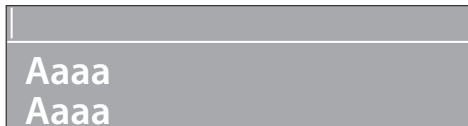
Calling residents

Residents may be called in three different ways:

Searching using the arrow keys



Press one of the arrow keys to access the address book



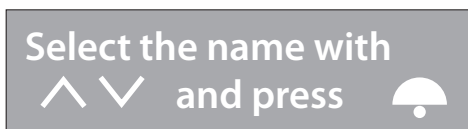
Use the arrow keys to scroll through the names until the name of the desired resident appears; for fast scrolling press and hold the key



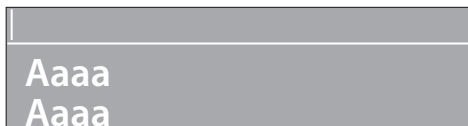
Press to send the call



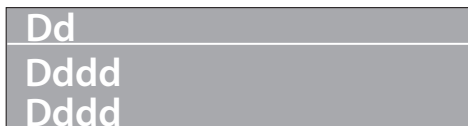
Through surname search



Press one of the arrow keys to access the address book



Use the keypad in the same way as a mobile phone keypad to enter the surname, or even just the initial, of the contact to call



Press to send the call




Vandal-resistant entrance panel


Installer manual



Using the numerical code

Select the name with
^ v and press 


1 2 _ _
Insert the code

1 2 3 4
and press 

If the resident's call code is known, simply enter it on the keypad



Enter the resident's code

Press to send the call 

Call to the switchboard (only in multifamily configuration)

To call the switchboard
press the button 

To call the switchboard directly
press this key 

Switchboard 

The switchboard called is the one configured in "Phonic module settings –Switchboard"

Vandal-resistant entrance panel

Installer manual

Call the only resident (Only in single family configuration)

To call press
the button



To call the only resident press this key





Calling




Door lock release using a numerical code

The procedure to follow for releasing the door lock associated to the entrance panel using the lock code changes depending on the length of the codes assigned to the residents, which can be up to the maximum length set.

Select the name with
^ v and press 

Press the key 



* * * * *

1	2 ABC	3 DEF
4 GHI	5 JKL	6 MNO
7 PQRS	8 TUV	9 WXYZ
C	0	On


Enter your own Lock code

Door open 

If the length of the code is the same as the maximum length set the door lock is released


* * * *

If the code is shorter than the maximum length set

Press the key 

Door open 

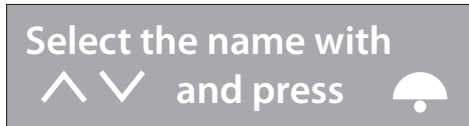
Vandal-resistant entrance panel


Installer manual

Changing the lock code

Each resident can change their lock code at any time using the following procedure.


This procedure is not valid if the entrance panel is part of an access control system, and the operating mode is M= 2



Press this key  for at least three seconds




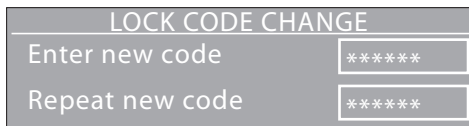
Enter the current lock code

Press the key 




Enter the new lock code

Press the key 



Re-enter the new lock code



Press the key 

Note:

- if **M = 0**: every resident has a unique lock code
- if **M = 2**: the lock codes are managed by the access control central, and several residents can share the lock code

If the new code already exists, an error message will be displayed.

